



We Are Not Alone Get Together



**Speaker/Discussion Meeting with
Games, Music & Fellowship to Follow!!!**

Saturday, February 11, 2023

5:00-6:00 pm – Fellowship/Pot Luck

6:00-7:00 pm – Speaker/Discussion Meeting

7:00-9:00pm – Games, Snacks, Music and Fellowship

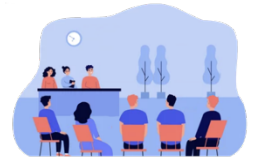
WHERE: Grace Episcopal Church, 76 Eldredge St, Newton, MA

This facility is wheelchair accessible.

WHY: Valentine's Day can be a struggle, so get some extra support and fellowship to help stay sober.



WHAT: This is an open meeting – family, friends, and significant others are welcome. Hear and share experience, strength, and hope while socializing with others in recovery. It's a chance to meet new friends and enjoy a sober evening.



BRING: Please bring a dinner item, snack or drink to share.
(If you make a food item, please include a list of ingredients as some have food allergies.)



✓ Games, musical instruments, etc.

COST: Suggested donation \$10 – more if you can, less if you can't. –
No one will be turned away! Cost is to cover the hall rental.



BAD WEATHER?: *A phone meeting will be held if the in-person event needs to be cancelled due to adverse weather conditions.*

If we have to cancel due to weather, NEI will post a notice on its website www.slaanei.org by 2:00 pm on the day of the event. You can also call [NEI's answering service](tel:617-625-7961) at 617-625-7961.

5:00-9:00 pm Zoom Meeting if in-person event is cancelled due to weather:

Zoom Information: Meeting ID: 872 4115 2178 Passcode: 789123



QUESTIONS?: Email activities@slaanei.org or call 617-625-7961.

Please help us spread the word and bring this flyer to your meetings.
You may want to read this flyer during meeting announcements.

DIRECTIONS TO GRACE EPISCOPAL CHURCH

MASS PIKE/RTE. 90 FROM THE WEST:

Take Exit 17 (Newton) and merge onto the one-way loop at the end of the exit ramp. Take your first right on Centre Street. At the first set of lights, go left on Church Street. Then take the first left on Eldredge Street and Grace Church will be the first building on your right side.

MASS PIKE/RTE. 90 FROM THE EAST (BOSTON):

Take Exit 17 (Newton) and go straight through the first set of lights. Avoid the Mass Pike West entrance on your left. Continue straight through the second set of lights at this intersection. Bear left and proceed around the Crowne Plaza Hotel back over the Mass Pike. Take your first right on Centre Street. At the first set of lights, go left on Church Street. Then take the first left on Eldredge Street and Grace Church will be the first building on your right side.

FROM RTE. 128 (ROUTE 95):

Follow 128 (Route 95) to Newton, Exit 24 (Route 30) onto South Avenue toward Newton. The Marriott Hotel Newton will be on your left as you proceed East on Rte. 30/Commonwealth Ave. for a little more than 3 miles. Turn left on Centre Street at the lights. Church Street will be on your right in approximately 1.4 miles. Turn right on Church Street (at the lights) and then take the first left on Eldredge Street and Grace Church will be the first building on your right side. Please note: if you pass Church Street, you will find yourself going around the rotary at the Crowne Plaza Hotel! Just go around and take a right on Centre Street. Church Street will be the second left.

FROM THE NORTH:

Take Route 93 South to Exit 20, Massachusetts Turnpike West (I-90). Follow the Mass Pike to Exit 17 (Newton) and go straight through the first set of lights. Avoid the Mass Pike West entrance on your left. Continue straight through the second set of lights at this intersection. Bear left and proceed around the Crowne Plaza Hotel back over the Mass Pike. Take your first right on Centre Street. At the first set of lights, go left on Church Street. Then take the first left on Eldredge Street and Grace Church will be the first building on your right side.

FROM THE SOUTH:

From Cape Cod or other points south, take Route 3 North to Route 93 North to Exit 20, Massachusetts Turnpike West. Follow the Mass Pike to Exit 17 (Newton) and go straight through the first set of lights. Avoid the Mass Pike West entrance on your left. Continue straight through the second set of lights at this intersection. Bear left and proceed around the Crowne Plaza Hotel back over the Mass Pike. Take your first right on Centre Street. At the first set of lights, go left on Church Street. Then take the first left on Eldredge Street and Grace Church will be the first building on your right side.

PUBLIC TRANSPORTATION:

At MBTA Green Line Kenmore Square Station, take Bus 57 to Park Street and Tremont Street stop (Newton Corner). See map above for directions to 76 Eldredge Street. The Watertown Yard, which services other bus routes is within ½ mile of Grace Church. For further information, please visit MBTA's web site at <http://www.mbta.com> or contact them at 617-222-3200.

