

Join New England Intergroup for Barbeque, Fellowship Meeting, and Outdoor Activities!



Saturday, August 26th 2017 11:00am to 4:00pm

WHAT: Here is what has been scheduled:

Barbeque 11:00AM - 12:30PM
Getting Current 12:30PM - 1:30PM
Outdoor Activities 1:30PM - 4:00PM

WHERE: Houghton's Pond, 840 Hillside Street, Milton, MA 02186, Picnic Site #4

Houghton's Pond is in the scenic Blue Hills. Houghton's Pond is a spring-fed kettle hole pond formed by receding glaciers approximately 10,000 years ago. Houghton's Pond Recreation Area offers a variety of recreational activities, including swimming, fishing, picnicking, and hiking as well as a playground, concession pavilion, and Visitor's Center. Restrooms and a first aid station are open during the summer.

For more information about Houghton's Pond, you may visit the Department of Conservation and Recreation's web site at <http://www.mass.gov/eea/agencies/dcr/massparks/region-south/houghtons-pond-recreation-area.html>

WHO: This event is open to all, not just SLAA members. In the past participants have brought their friends and families. The getting current part of the afternoon will include open sharing and the people you bring should be familiar with what we do in our fellowship.

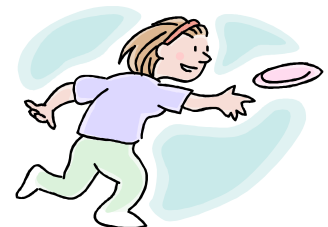
OTHER DETAILS:

We will have use of a grill at Houghton's Pond. Hamburgers, hot dogs, condiments, and breads for the cooked items will be provided at the event along with soda and water. We will also have plates, cups, napkins, plastic and serving utensils. Members are asked to bring side dishes, chips, desserts, etc. **Suggested donation is \$5.00, more if you can or less if you can't.**

Outdoor Activity Ideas: Frisbee, lawn games, volleyball and softball, loafing, etc.

What if it rains?

No rain date has been set. If it rains, the event will be cancelled. A notice will be published on NEI's web site at <http://www.slaanei.org> by 8:00AM on the day of the event. This information will also be available by calling NEI's answering service at 617-625-7961.



Questions:

Call 617-625-7961 and leave a message for the Barbeque or contact us via email at activities@slaanei.org

Please help us spread the word and bring this flyer to your meetings. You may want to read this flyer during meeting announcements.

DIRECTIONS:

From Boston: Take I-93 South toward I-93 South/Quincy/I-90 West/Worcester for 14 miles. Take exit #3/Houghton's Pond/Ponkapoag Trail onto Blue Hill River Rd. At top of ramp, take right onto Blue Hill River Road. Take first right at sign “**Houghton’s Pond – Picnic Sites and Ball Fields**”. Follow to end where there is parking lot. **BBQ is at Picnic Site #4.**

From Cape Cod: Take Route 3 North. Take left fork onto I-93 South toward Dedham. Take exit 3 (Houghton's Pond, Ponkapoag Trail exit) onto Blue Hill River Rd. At top of ramp, take right onto Blue Hill River Road. Take first right at sign “**Houghton’s Pond – Picnic Sites and Ball Fields**”. Follow to end where there is parking lot. **BBQ is at Picnic Site #4.**



West of Boston: Take Mass Pike (I-90) to Exit #14/I-95/RT-128/N.H.-Maine/South Shore onto I-95 S toward South Shore/Cape Cod for 13 miles. Continue on I-93 N at exit #12 toward Boston. Take exit #3/Houghton's Pond/Ponkapoag Trail. At end of ramp, take left onto Blue Hill River Road. Take first right at sign “**Houghton’s Pond – Picnic Sites and Ball Fields**”. Follow to end where there is parking lot. **BBQ is at Picnic Site #4.**

From North of Boston: Take I-95 S towards Lowell/Waltham. Continue on I-93 N at exit #12 toward Boston. Take exit #3/Houghton's Pond/Ponkapoag Trail toward Houghton’s Pond. Take first right at sign “**Houghton’s Pond – Picnic Sites and Ball Fields**”. Follow to end where there is parking lot. **BBQ is at Picnic Site #4.**



From Rhode Island: Take ramp I-95 N toward Boston. Take exit #12/I-93 N/Boston onto I-93 N. Take exit #3/Houghton's Pond/Ponkapoag Trail toward Houghton’s Pond. At end of ramp, take left onto Blue Hill River Road. Take first right at sign “**Houghton’s Pond – Picnic Sites and Ball Fields**”. Follow to end where there is parking lot. **BBQ is at Picnic Site #4.**

Public Transportation: The Great Blue Hill and Houghton’s Pond sections are accessible from the Red Line's Ashmont Station. From Ashmont, take the trolley to Mattapan. The Canton and Blue Hills bus services the Trilside Museum and Great Blue Hill on Route 138. For the Houghton’s Pond area, exit the bus at Blue Hill River Road. Cross the road and walk one mile east on Hillside Street. Please also visit <http://www.mbta.com>